

Operations Management Leadership Program

OMLP

Build your leadership and technical skills through challenging rotational assignments, high-impact projects, and world-class training. Gain the experience and expertise you need to succeed with products that will change the world.



imagination at work



GE Today

\$147 billion

2012 revenue

53%

revenue outside US

160

countries

300,000

employees

\$1B+ invested

annually on training & education programs



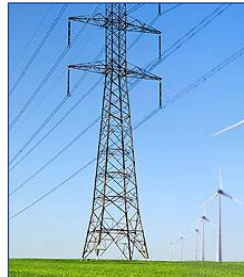
Our Portfolio

GE works on things that matter. The best people and the best technologies taking on the toughest challenges. Finding solutions in energy, health and home, transportation and finance. Building, powering, moving and curing the world. Not just imagining. Doing. GE works.

Power & Water



Energy Management



Oil & Gas



Transportation



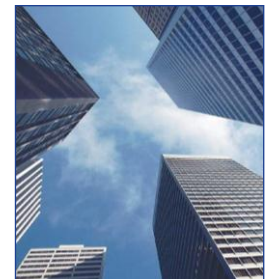
Aviation



Healthcare



Home & Business Solutions



Capital

GE around the world

More than 40,000 Marketing & Sales Professionals globally

U.S.
\$70B

Europe
\$29B

Canada &
The Americas
\$13B

Middle East,
Africa & Others
\$12B

Asia Pacific
\$23B

2012 revenues total \$147 billion
with over 300,000 employees.

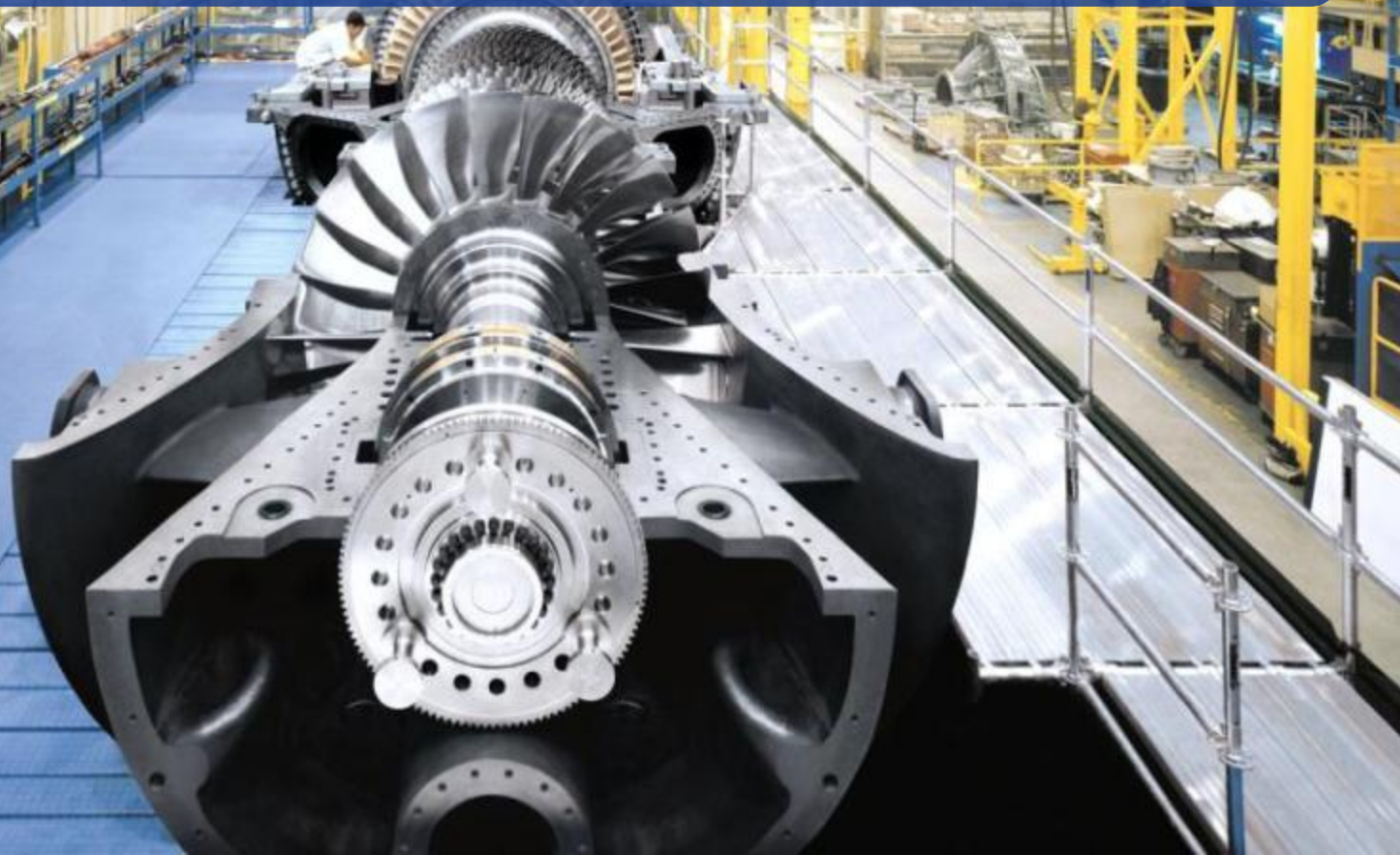


¹ Includes U.S. exports to external customers

² Includes \$~5B from "Other Global" areas

Key statistics

- Over 300,000 employees worldwide
- Operating in more than 160 global locations
- Only current DJIA company in original index
- Rated AA+ with stable outlook by S&P



Our reputation

- **World's Most Admired Companies**
Fortune, 2012
- **Most Innovative Company**
Fast Company, 2011
- **Most Ethical Company**
Ethisphere, 2012

- **Best Companies for Leadership**
Forbes, 2012
- **Best Rotational Program for MBAs**
Universum, 2012
- **Best Rotational Program for Undergrads**
Universum, 2012



Developing Global Supply Chain Management Leaders of the Future...



imagination at work



Operations Management Leadership Program

Building and delivering GE leaders for 60 years

- An intense 2-year entry-level development program requiring 4 rotational assignments
- Technical training in LEAN manufacturing, finance and sourcing, Six Sigma, global supply chain management, environmental health & safety, team leading, and project management
- Broad experiences include:
 - Manufacturing shop operations
 - Process Quality Engineering
 - Six Sigma quality
 - Materials management
 - Lean Manufacturing Project Management
 - Power Plant Operations and Maintenance



Rotational assignments

challenging assignments, resulting in real jobs with real responsibility and real impact to operational excellence

- LEAN Manufacturing/Process Engineering
- Shop Team Leader
- Materials Management
- Sourcing/Supply Chain Management
- Quality
- Environmental, Health and Safety



Training

well balanced curriculum developing future operations leaders

Operations Training

- Contemporary Manufacturing
- Global Supply Chain Management
- Lean Six Sigma
- Environmental, Health and Safety
- Team Leading Skills
- Project Management
- Negotiation Skills
- Manufacturing Finance

Business & Leadership Training

- Corporate Leadership Courses
- Managing Your Career



Why OMLP?

“ 5-8 yrs of experiences in 2 yrs time.”

- Diverse real Supply Chain jobs & real deliverables
- Structured approach, formal feedback
- Training in real Supply Chain problem solving & business acumen
- Expansive networks, career coaching

- Technical Acceleration of Key Talent
- Operation Management Leadership Seminar
- Foundation of Leadership
- Impact



Life after program

The training is universal... the experience is as individual as you

Near Term

- Work on a Team/Project Where You Performed a Rotation
- Continue to develop LEAN DNA
- Pursue a Career with Daily Impact to the Bottom-line

Long-Term

- Diverse Global Supply Chain Experiences
- Focus on Expertise and Sustained Accomplishments
- Broad Inclusive Network
- Life-Long Relationships



What we're looking for

people with energy & drive to deliver LEAN growth to GE's production systems

- Global Mindset - Ability to Operate Across Cultures and are Geographically Flexible
- Demonstrated Leadership and Academic Excellence
- Analytical Problem Solving Skills
- Business Acumen
- Strong Communication and Interpersonal Skills
- Competitive Spirit to Excel
- Relevant Academic and/or Work Experience



Selection process (2014 Spring)

